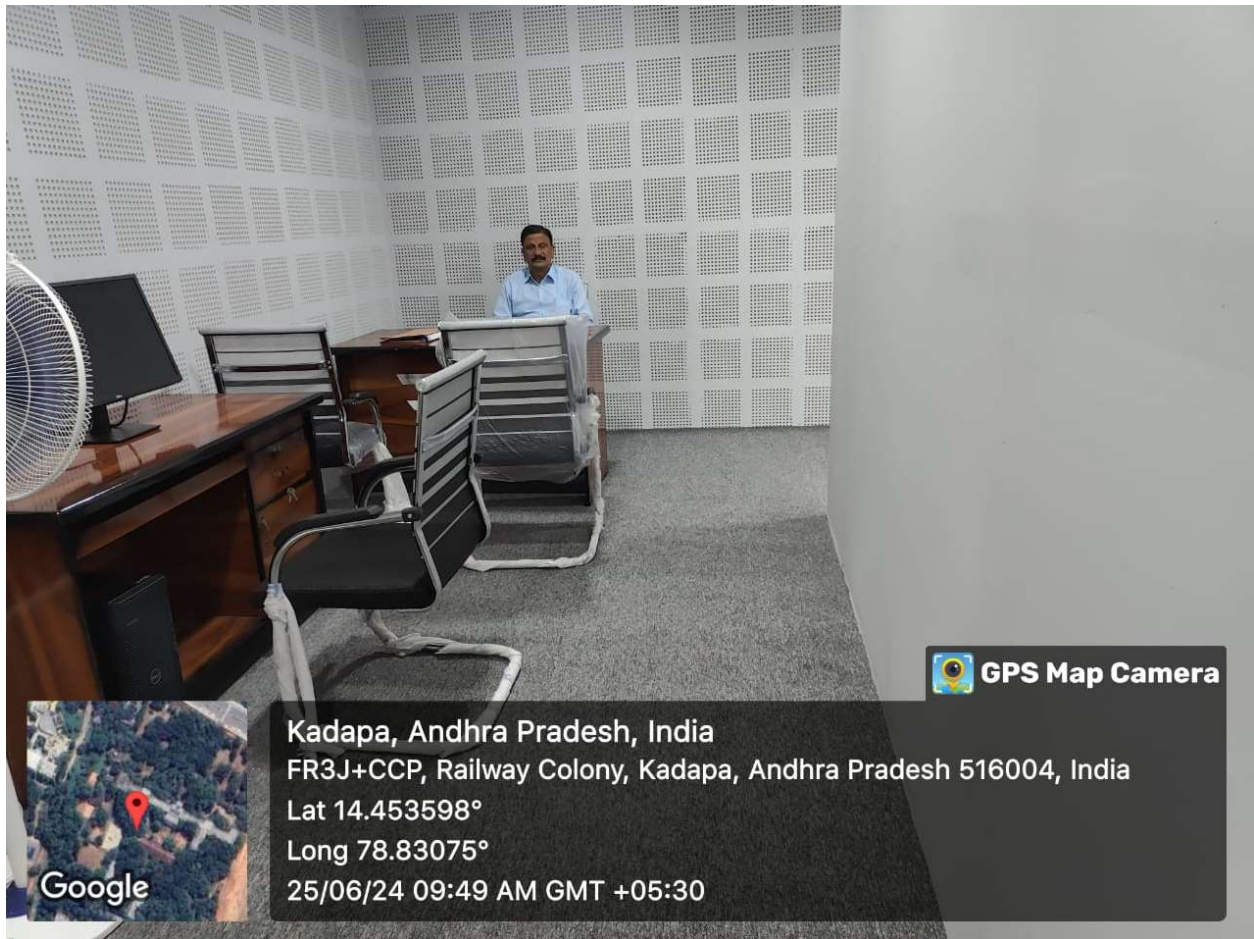


Government College for Men (Autonomous), Kadapa

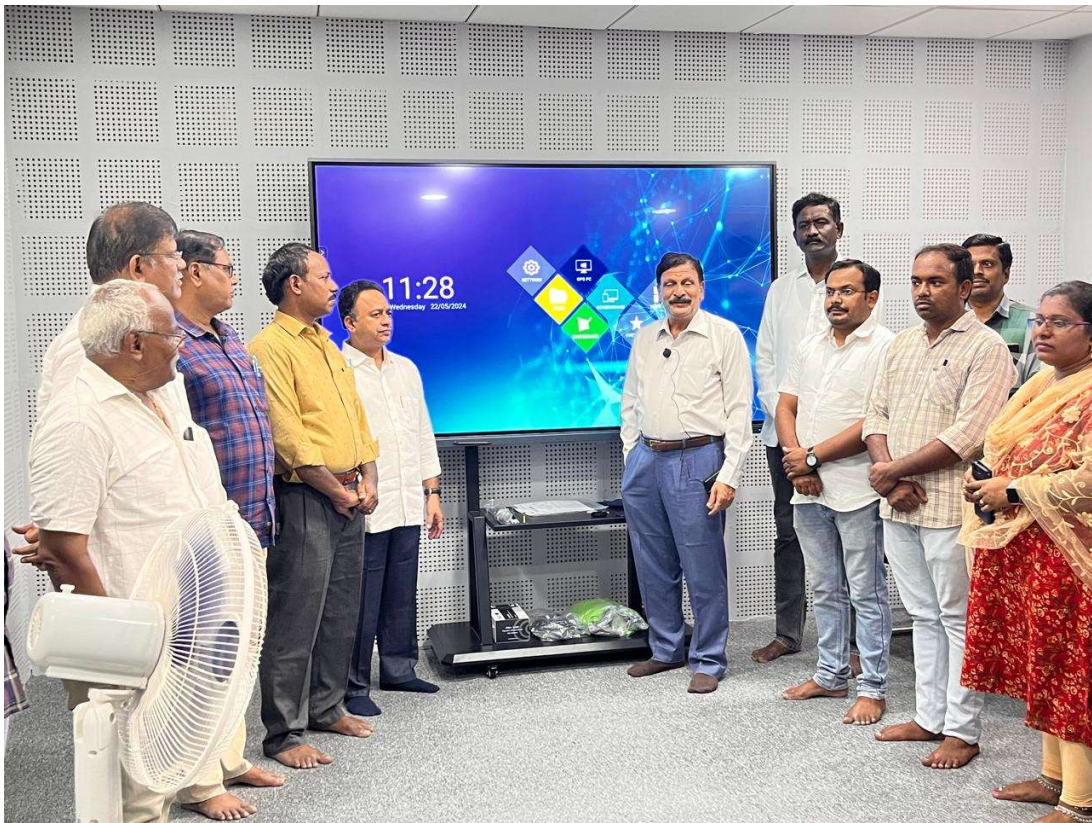
LMS Recording Studio Infrastructure



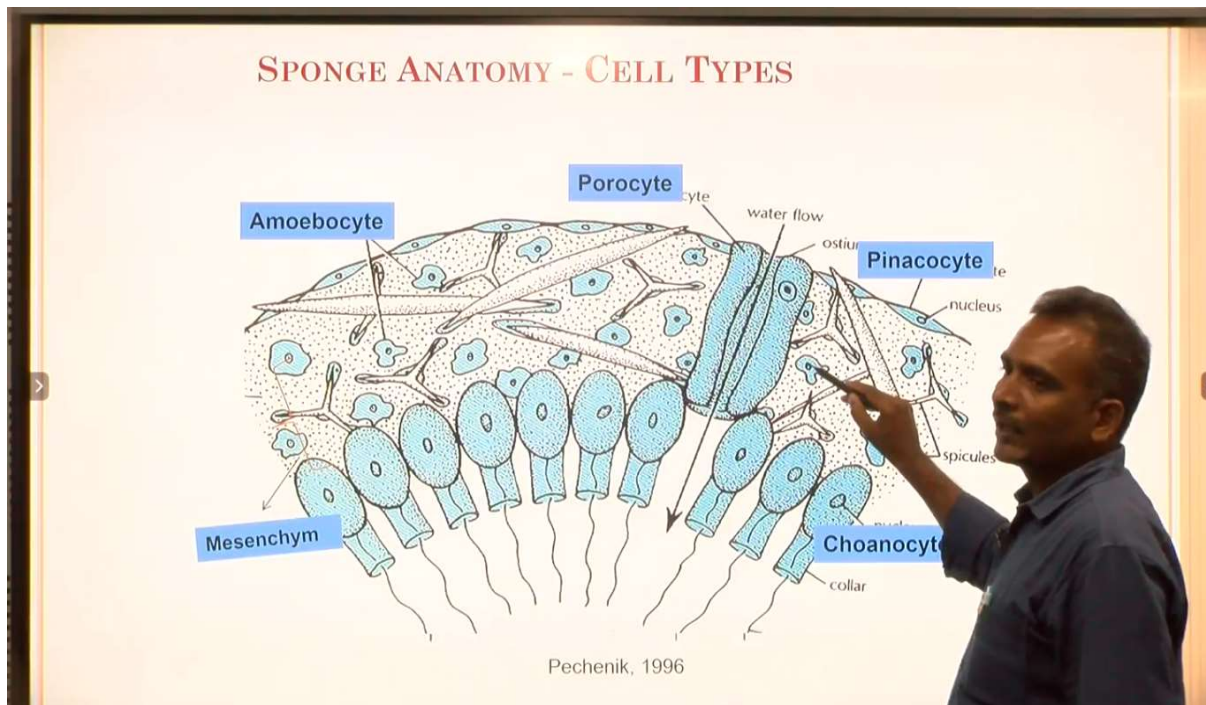
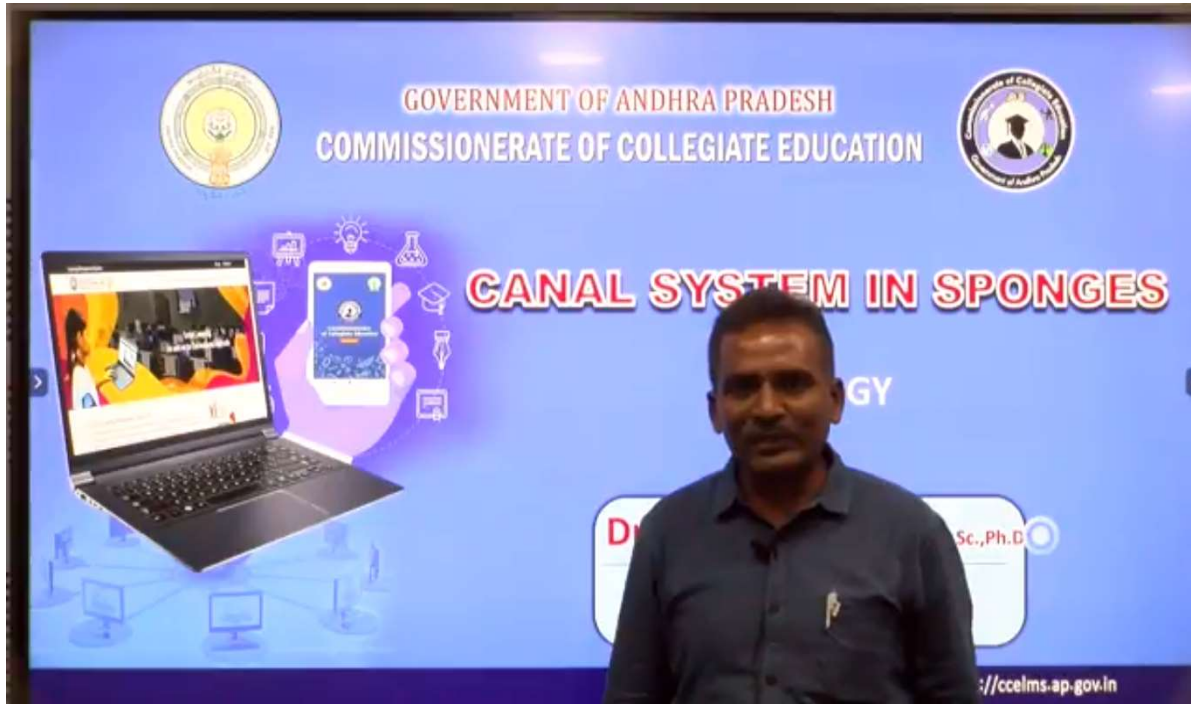








LMS e-content generation by Dr. P. Ravi Sekhar, Lecturer in Zoology

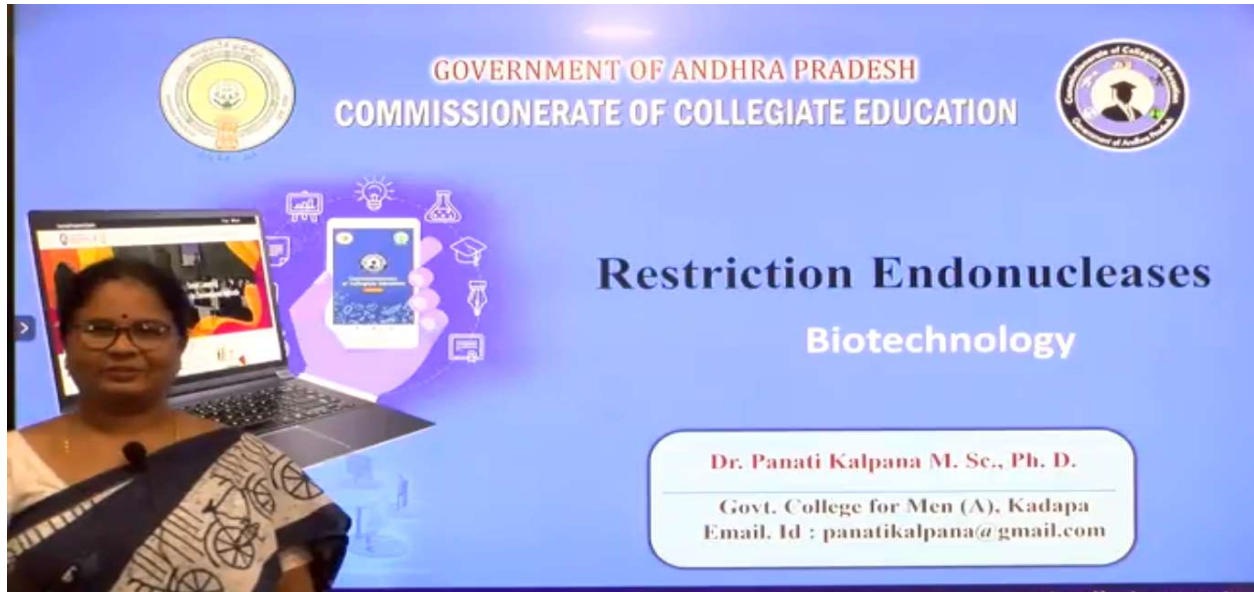


LMS e-content generation by Dr. P. Kalpana, Lecturer in Bio-technology

GOVERNMENT OF ANDHRA PRADESH
COMMISSIONERATE OF COLLEGIATE EDUCATION

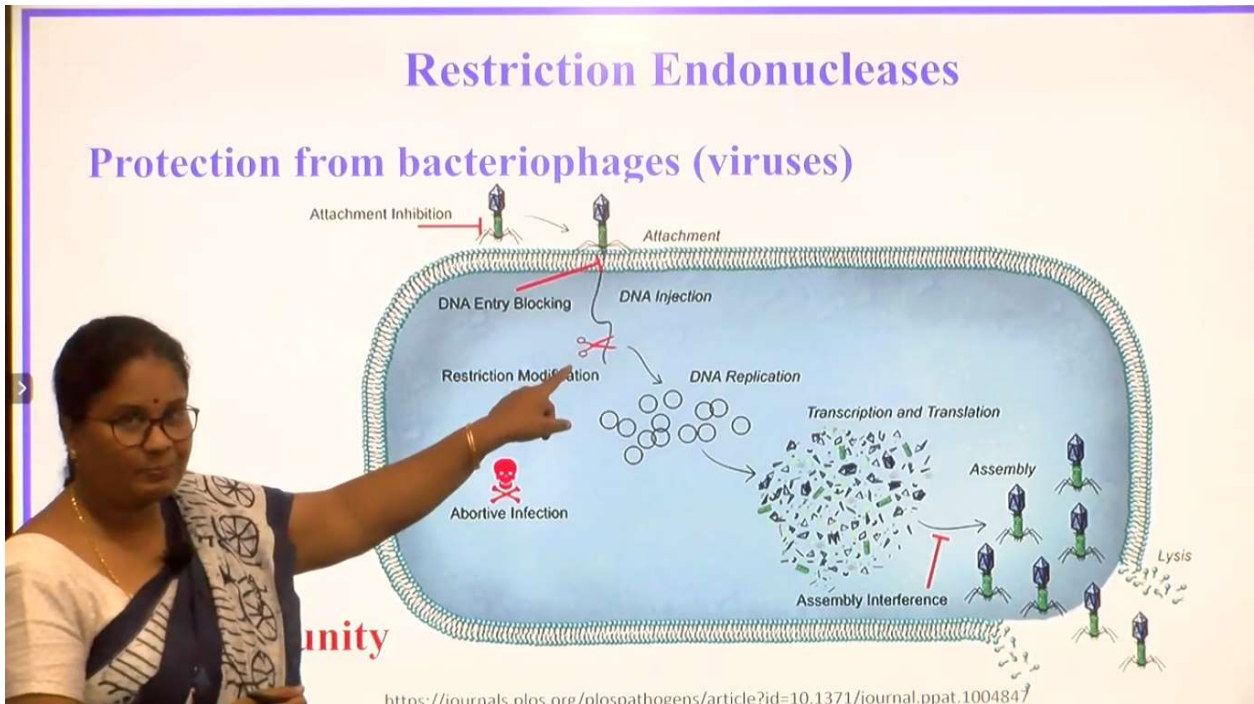
Restriction Endonucleases Biotechnology

Dr. Panati Kalpana M. Sc., Ph. D.
Govt. College for Men (A), Kadapa
Email. Id : panatikalpana@gmail.com



Restriction Endonucleases

Protection from bacteriophages (viruses)



Attachment Inhibition

Attachment

DNA Entry Blocking

DNA Injection

Restriction Modification

DNA Replication

Abortive Infection

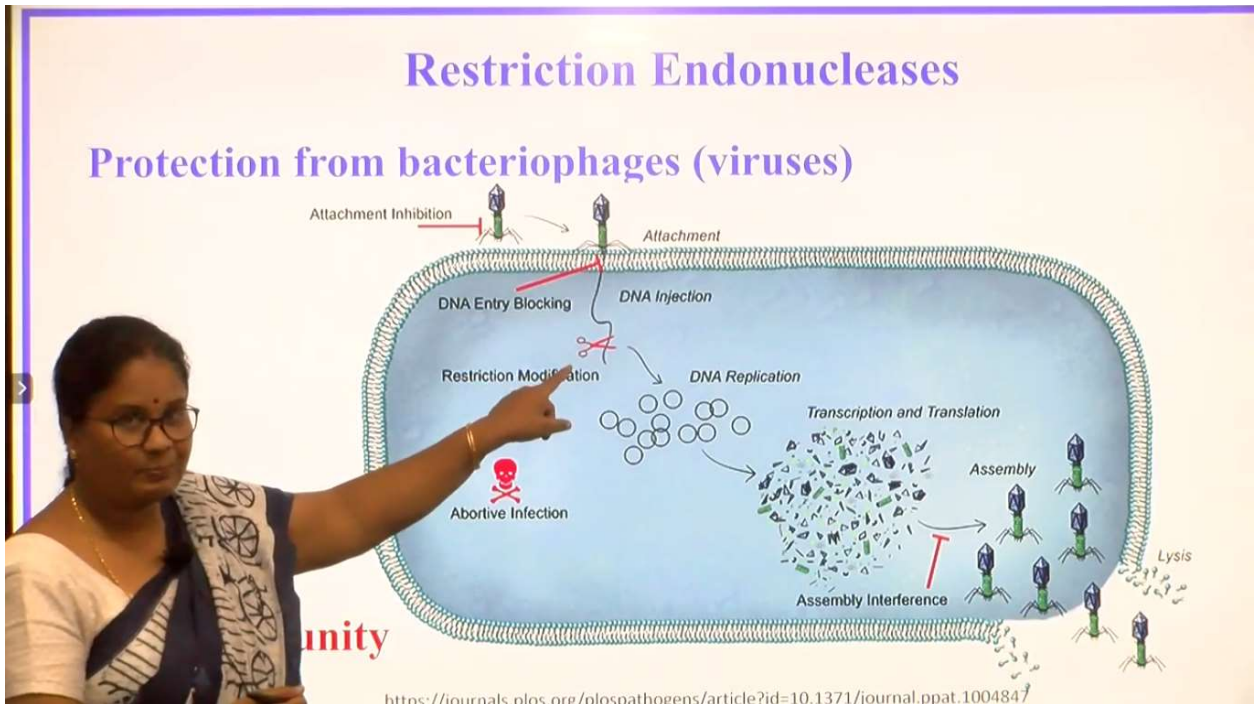
Transcription and Translation

Assembly Interference

Assembly

Lysis

<https://journals.plos.org/plospathogens/article?id=10.1371/journal.ppat.1004847>



LMS e-content generation by Dr. Y. Savithri, Lecturer in Zoology



GOVERNMENT OF ANDHRA PRADESH
COMMISSIONERATE OF COLLEGIATE EDUCATION

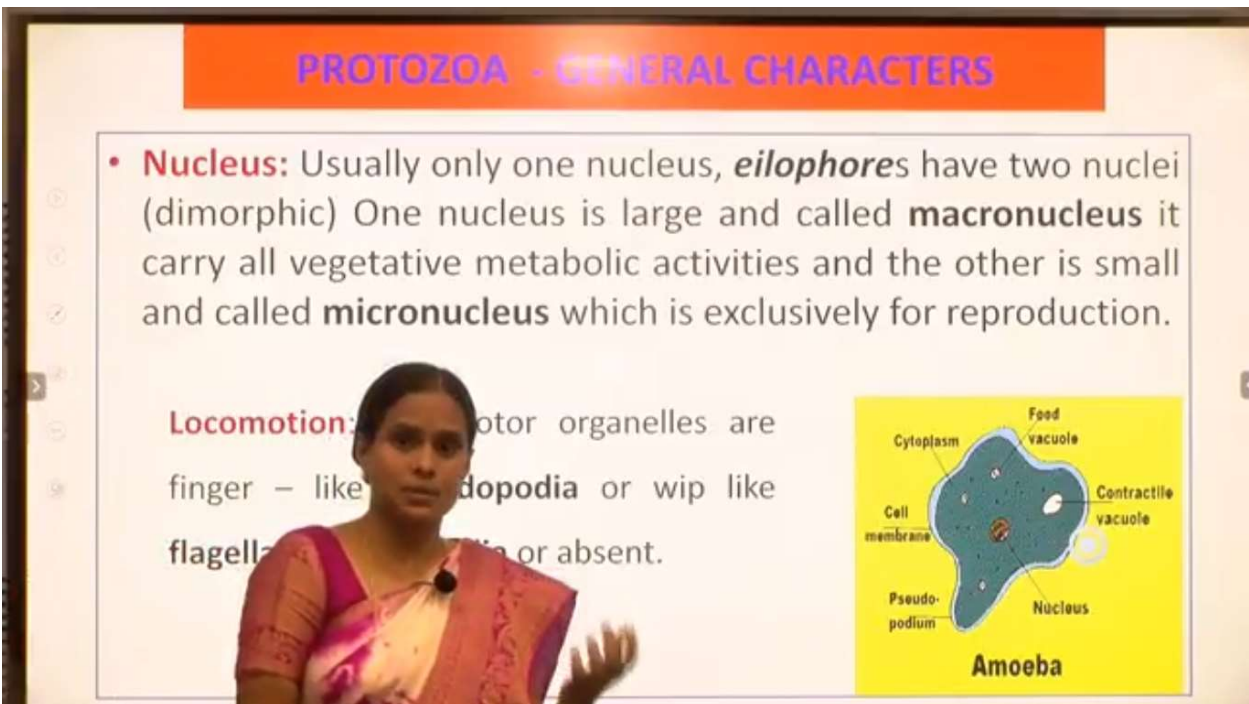
PROTOZOA GENERAL CHARACTERISTICS AND CLASSIFICATION

ZOOLOGY

Dr.Y. SAVITHRI M.Sc., Ph.D
Govt. College for Men (A), Kadapa
Email. Id : pesala1980@gmail.com

Learn more at <http://ecolms.ap.gov.in>

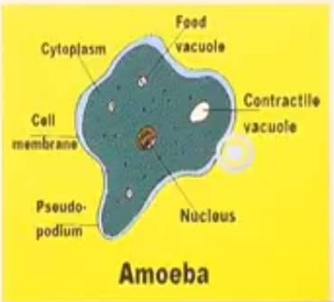
The slide features a woman in a pink and white saree standing in front of a blue background. The background includes logos of the Government of Andhra Pradesh and the Commissionerate of Collegiate Education, along with icons representing a laptop, a smartphone, and various educational symbols like a lightbulb, a flask, and a graduation cap.



PROTOZOA - GENERAL CHARACTERS

- **Nucleus:** Usually only one nucleus, *eilophores* have two nuclei (dimorphic) One nucleus is large and called **macronucleus** it carry all vegetative metabolic activities and the other is small and called **micronucleus** which is exclusively for reproduction.

Locomotion: Motor organelles are finger – like **pseudopodia** or wip like **flagella** or absent.



Amoeba

The diagram shows a cross-section of an amoeba with the following labeled parts: Cytoplasm, Cell membrane, Pseudo-podium, Food vacuole, Contractile vacuole, and Nucleus.

The slide also features a woman in a pink and white saree standing in front of a white background with a navigation sidebar on the left.

LMS e-content generation by Dr. Vasivulla Bhakhtiyari, Lecturer in Urdu



LMS e-content generation by Dr. K.N. Sundareswara Rao, Lecturer in Telugu

Dr. K.N. Sundareswara Rao,
M.A., M.Phil., Ph.D.,
Lecturer in Telugu
Department of Telugu
SCNR Govt. Degree College, Proddatur

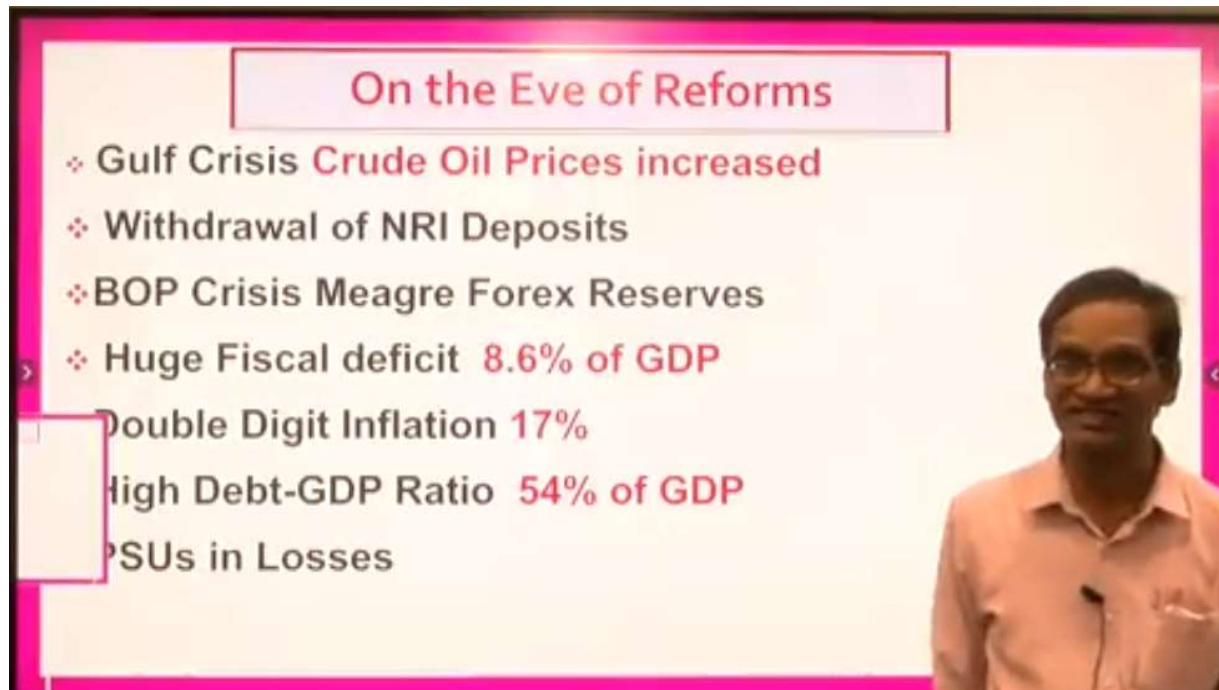
పరిశోధన నిర్వచనం
పరిశోధన అంటే ఆన్వేషించడం, వెదకడం అనే అర్థాలున్నాయి. 'Research' అనే ఆంగ్ల పదానికి సమానార్థకంగా తెలుగులో పరిశోధన అనే పదాన్ని వాడుతారు. 'RESEARCH' అనే పదం ఫ్రెంచి భాషా పదమైన 'RECHER' నుండి వుట్టింది. ఈ French పదానికి 'వెదకటం' అని అర్థం.

పరిశోధన క్రమం (Research Process)

1. పరిశోధనాంశ నిర్వచనం
2. సమగ్ర సాహిత్య పరిశీలన
3. ఊహాప్రతిపాదన
4. పరిశోధన ప్రణాళిక
5. విషయ సేకరణ

పంపిణీ
వస్తు సామగ్రి విశ్లేషణ
ఊహాప్రతిపాదనను పరిరక్షించడం
కరణ, సమన్వయకరణ
ంతవ్యాస సమర్పణ, ఫలితాల ప్రకటన

**LMS e-content generation by Sri. K. Siva Ram,
Lecturer in Economics**



K. Siva Ram
PRINCIPAL
GOVT. COLLEGE FOR MEN (A)
KADAPA.